



2000 SERIES ROUND BUTTERFLY DAMPER

2000 SERIES ANSI CLASS WAFER | Rev. 03/04/20

Elite Industrial Controls is an American manufacturer of Industrial Control Valves and Dampers.

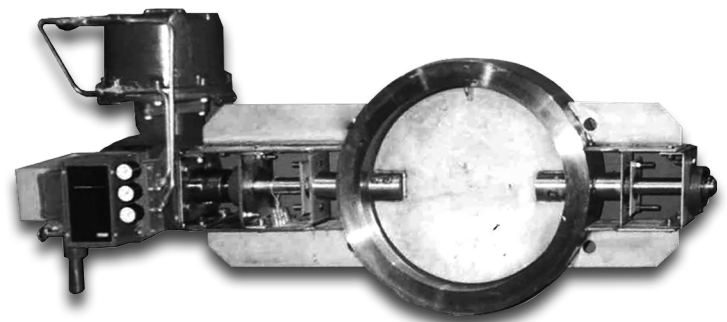
We offer solutions to Industrial Automation and thermal management solutions serving customers around the world in various industries and across several technological platforms. We are committed to providing customers with service of the highest possible level of quality.



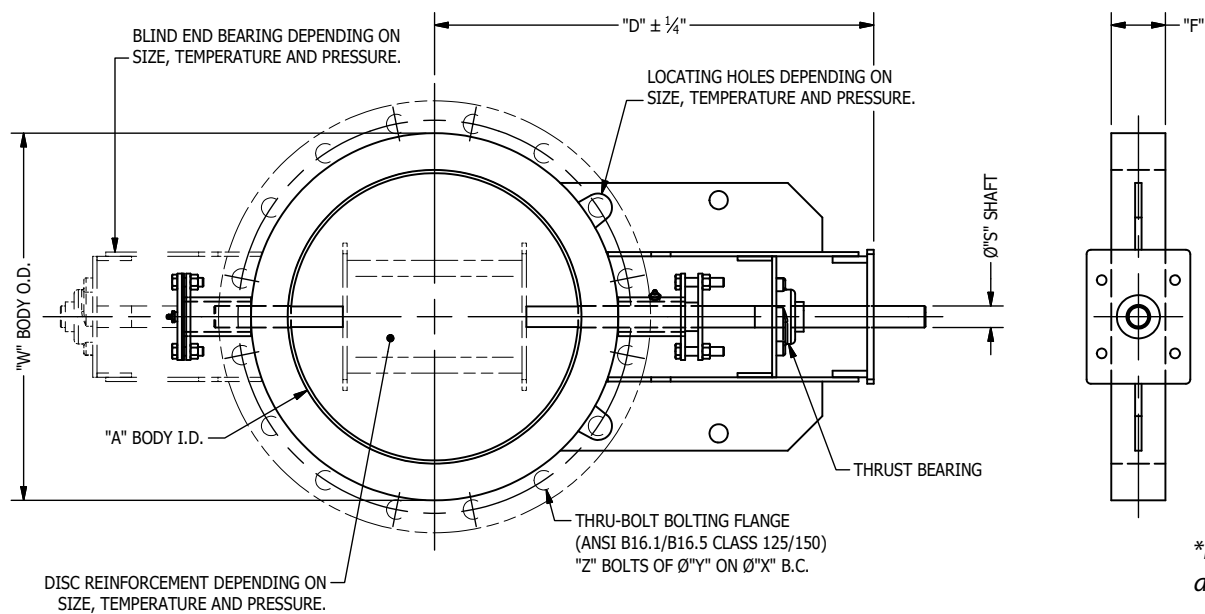
The 2000 series butterfly flange less control valve can be used in either throttling or on/off of varies applications. The valve body is constructed of carbon steel, stainless steel, aluminum or special alloy with fabricated brackets and stuffing boxes welded to the body. The valve is constructed to bolt between two adjacent flanges on the duct/pipe. The standard valve design is to bolt between ANSI/ASME B16.1 Class 125 flanges. Sizes 24" and smaller also match ANSI/ASME B16.5 Class 150. The valve's flange faces are flat face, machined or serrated are available as an option.

Construction and Material

Body, Disc & Flange	Standard - Carbon Steel Optional - 304 SS 4" to 10" - SCH-40 Wall Thickness
Drilling	Ductwork
Shaft	Standard - 304 SS (Stub) Optional - Through Shaft
Bushings	Carbon/Graphite
Packing Follower	Standard - 304 SS
Stuffing Box Housing	Standard - Carbon Steel Optional - 304 SS
Bearing	Power - Std. Blind - Optional




MODEL 2000 SERIES BUTTERFLY CONTROL VALVE




Nom. Size	Valve Dimensions (In Inches)					Bolting (In Inches)			Max. Pressure
	A	D	F	S	W	X	Y	Z	
2	2	15.375	1.625	0.5	3.75	4.75	0.625	4	333 psi
2.5	2.5	15.75	1.625	0.5	4.5	5.5	0.625	4	211 psi
3	3	15.75	1.625	0.5	5	6	0.625	4	151 psi
4	4	16.25	1.75	0.5	6.5	7.5	0.625	8	164 psi
5	5	16.5	1.75	0.5	7.5	8.5	0.75	8	105 psi
6	6	17.125	1.75	0.75	8.5	9.5	0.75	8	75 psi
8	8	18.375	1.875	0.75	10.5	11.75	0.75	8	69 psi
10	10	20.25	2	0.75	13	14.25	0.875	12	65 psi
12	12	21.625	2	0.75	15.5	17	0.875	12	44 psi
14	13.25	22.75	2.375	1	17.5	18.75	1	12	66 psi
16	15.25	24.125	2.375	1	20	21.25	1	16	49 psi
18	17	24.75	3.125	1.25	21.25	22.75	1.125	16	64 psi
20	19	26	3.125	1.25	23.5	25	1.125	20	52 psi
24	23	28.25	3.5	1.5	28	29.5	1.25	20	52 psi
30	29	31.75	3.75	1.5	34.5	36	1.25	28	32 psi
36	35	35.125	4	1.5	41	42.75	1.5	32	22 psi
42	41.25	38.5	4	1.75	47.75	49.5	1.5	36	22 psi
48	47.25	41.75	4	1.75	54.25	56	1.5	44	17 psi
54	53	45	4.5	2	60.75	62.75	1.75	44	17 psi
60	59	48.375	4.5	2	67.25	69.25	1.75	52	14 psi
66	65	53.625	5	2.5	74	76	1.75	52	18 psi

VALVE SEAT OPTIONS


*Leakage based on damper capacity



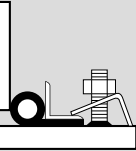
CONVENTIONAL SEAT
Swing-thru design,
*4-5% leakage



SCISSOR SEAT
Swing-thru design,
approx. *1-2% leakage



METAL SEAT
Materials same as body -
approx. *1% leakage



TADPOLE SEAT
Material furnished
varies with service.
Temp. to 1800°F,
approx. *1/4 of 1%
leakage