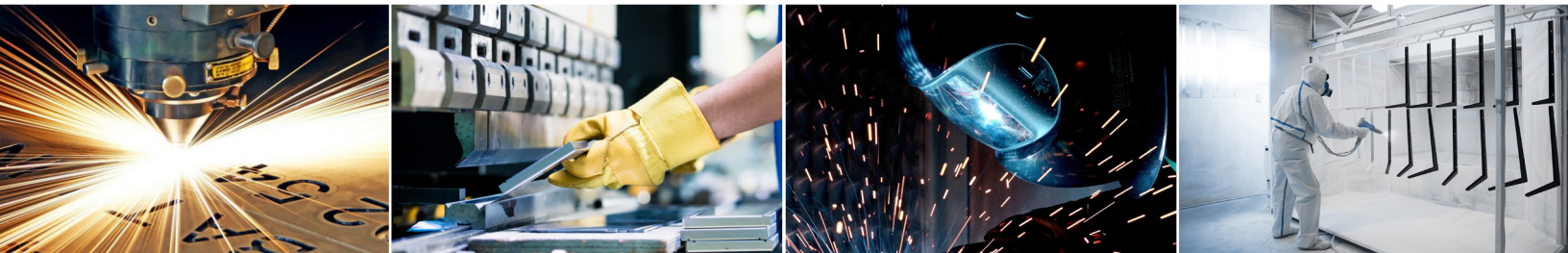




5000 SERIES BONNETED GATE VALVE

5000 SERIES BONNETED GATE VALVE | Rev. 03/04/20

Elite Industrial Controls is an American manufacturer of Industrial Control Valves and Dampers. We offer solutions to Industrial Automation and thermal management solutions serving customers around the world in various industries and across several technological platforms. We are committed to providing customers with service of the highest possible level of quality.

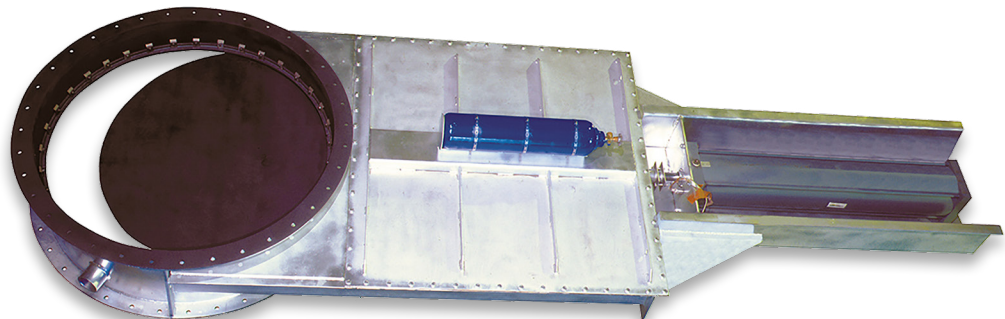


Slide Gate dampers include the 5000 Series (Bonnet) and the 5100 Series (Bonnetless). We offer our products in various shapes which include square, rectangular and round. Slide Gates are designed mainly for on/off services and are mostly used for shut-off. Refractory Lined Gate valves are available for high temperature applications. Gates can be supplied with or without actuation. Configurations include Pneumatic, Electric, Hydraulic and Electro-Hydraulic. The customer has an option of supplying their own actuation and we can manufacture shaft adapter and a mounting plate. If requested, we can mount and test per customer needs. Fail safe systems are optional on some applications.

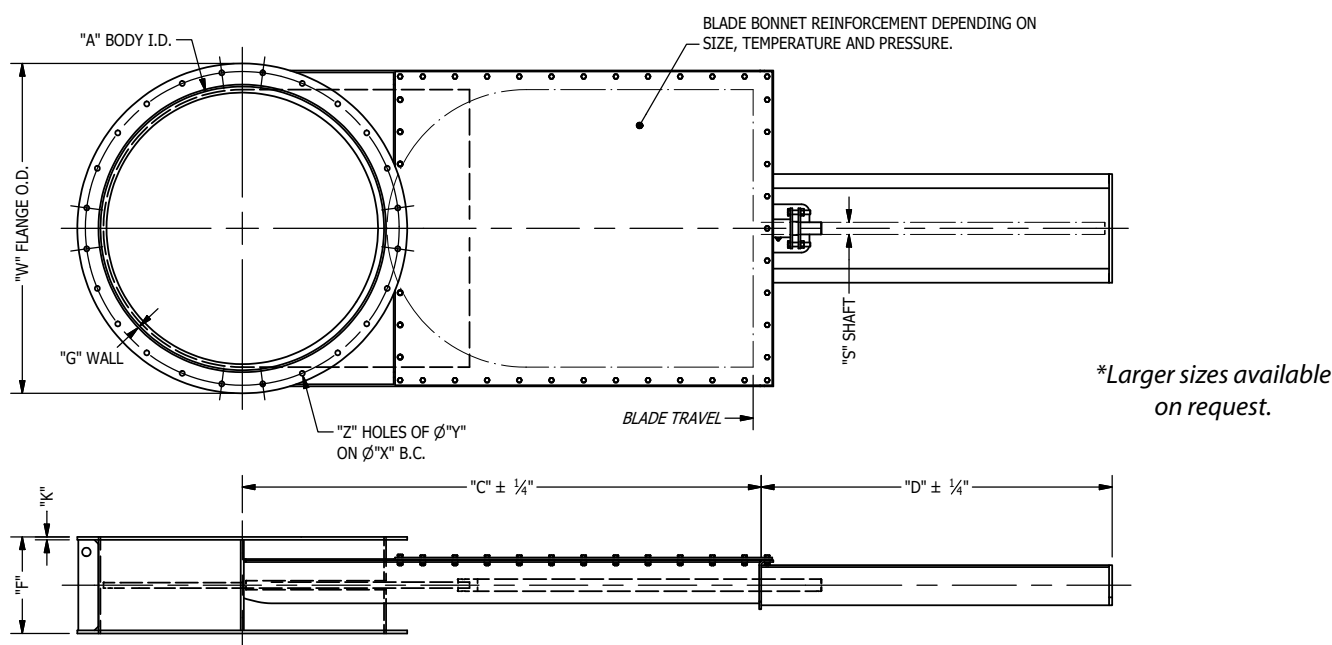


Construction and Material

Standard – Carbon Steel
Optional – Corten, Aluminum, Aluminum Br, Stainless (All 300 Series)
Carpenter 20, Titanium, Tantalum



MODEL 5000 SERIES BONNETED GATE VALVE



Nom. Size	Valve Dimension (In Inches)								Bolting (In Inches)		
	A	C	D	F	G	K	S	W	X	Y	Z
12	11.625	26	18	8.5	0.188	0.375	1	15.875	14.375	0.5	12
14	13.5	29	20	8.5	0.188	0.375	1	17.5	16	0.5	12
16	15.5	32	22	8.5	0.188	0.375	1	20	18.5	0.5	12
18	17.5	35	24	8.5	0.188	0.375	1	21.375	19.875	0.5	12
20	19.5	38	30	8.5	0.188	0.375	1.5	23.625	22.125	0.5	16
22	21.5	41	32	8.5	0.188	0.375	1.5	25.75	24.25	0.5	16
24	23.25	47	34	12	0.25	0.375	1.5	28	26.5	0.5	16
26	25.25	50	36	12	0.25	0.375	1.5	30	28.25	0.5	16
28	27.25	53	38	12	0.25	0.375	1.5	32.5	31	0.5	20
30	29.25	56	40	12	0.25	0.375	1.5	34.5	33	0.625	20
32	31.25	59	42	12	0.25	0.375	1.5	36.75	35	0.625	20
34	33.25	62	44	12	0.25	0.375	1.5	38.75	37	0.625	20
36	35.25	65	46	12	0.25	0.375	1.5	41	39	0.625	24
38	37.25	68	48	12	0.25	0.375	1.5	43.5	41	0.625	24
40	39.25	71	50	12	0.375	0.375	1.5	45.5	43	0.625	28
42	41.75	75	52	12	0.375	0.375	1.5	47.75	45	0.625	28
44	44	78	52	12	0.375	0.375	2	50	47	0.75	32
46	46	81	54	12	0.375	0.375	2	52	49	0.75	32
48	48.25	85	57	18	0.375	0.375	2	54.25	51.5	0.75	36

VALVE SEAT OPTIONS

*Leakage based on damper capacity

CONVENTIONAL SEAT
Swing-thru design,
*4-5% leakage

SCISSOR SEAT
Swing-thru design,
approx. *1-2% leakage

METAL SEAT
Materials same as body -
approx. *1% leakage

TADPOLE SEAT
Material furnished
varies with service.
Temp. to 1800°F,
approx. *1/4 of 1%
leakage