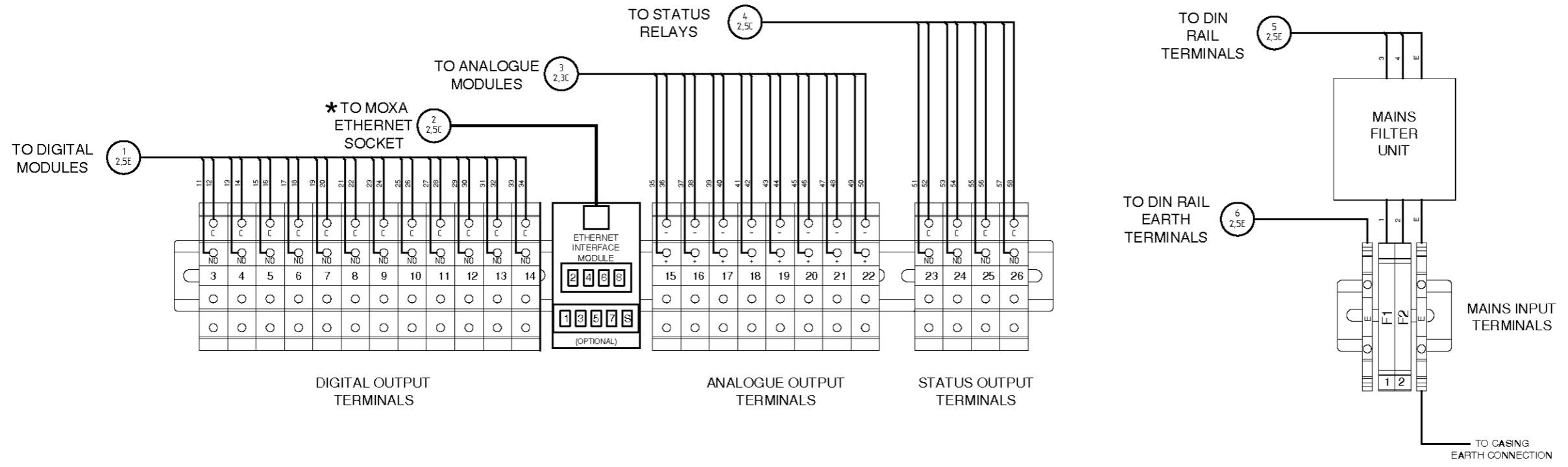


TERMINAL	DESIGNATION	COLOUR CODING
1	Tx+	Orange/White
2	Tx-	Orange
3	Rx+	Green/White
4	Not Used	Blue
5	Not Used	Blue/White
6	Rx-	Green
7	Not Used	Brown/White
8	Not Used	Brown

NOTES :-
 1. To Connect to ethernet using muticore cable tails connect the cable as per the above table
 2. To connect to ethernet network using an RJ45 connector unplug the ethernet cable, marked *, that goes from the ethernet interace module to the Moxa moudle at the Moxa module end and plug in the extrenal RJ45 netwrok to the Moxa port

USER CONNECTIONS	
TERMINAL	FUNCTION
1	SYSTEM SUPPLY (L)
2	SYSTEM SUPPLY (N)
3	DGITAL OUTPUT 1
4	DGITAL OUTPUT 2
5	DGITAL OUTPUT 3
6	DGITAL OUTPUT 4
7	DGITAL OUTPUT 5
8	DGITAL OUTPUT 6
9	DGITAL OUTPUT 7
10	DGITAL OUTPUT 8
11	DGITAL OUTPUT 9
12	DGITAL OUTPUT 10
13	DGITAL OUTPUT 11
14	DGITAL OUTPUT 12
15	ANALOGUE OUTPUT 1
16	ANALOGUE OUTPUT 2
17	ANALOGUE OUTPUT 3
18	ANALOGUE OUTPUT 4
19	ANALOGUE OUTPUT 5
20	ANALOGUE OUTPUT 6
21	ANALOGUE OUTPUT 7
22	ANALOGUE OUTPUT 8
23	STATUS OUTPUT 1 (Check Function)
24	STATUS OUTPUT 2 (Maintenance reqd.)
25	STATUS OUTPUT 3 (Out of Sepcification)
26	STATUS OUTPUT 4 (Failed)



ROSEMOUNT

CASCADE TECHNOLOGIES LTD
 GLENDEVON HOUSE-CASTLE BUSINESS PARK
 STIRLING FK9 4TZ-UK

GENERAL DRAWING PRACTICE TO ISO14617, PNEUMATIC SYMBOLS DRAWN TO ISO1219-1, PIPING AND INSTRUMENTATION DIAGRAMS (P&ID) DRAWN TO ISO 10628, WIRING DRAWN TO IEC61346 & ICS 19-2002, WHERE APPLICABLE, CUSTOM SYMBOLS LISTED ON KEY PROVIDED, BLOCK DIAGRAMS CAN BE INSERTED TO CLARIFY FUNCTIONALITY.

THIS DRAWING AND DATA CONTAINED WITHIN IT ARE THE SOLE PROPERTY OF CASCADE TECHNOLOGIES LTD, PART OF EMERSON PROCESS MANAGEMENT AND CANNOT BE COPIED, COMMUNICATED OR REPLICATED PARTIALLY OR IN ITS ENTIRETY WITHOUT EXPRESSED WRITTEN CONSENT BY CASCADE TECHNOLOGIES LTD.

A3

DO NOT SCALE
 DO NOT ALTER
 MANUALLY

DRAWING No:
W-2000-0038

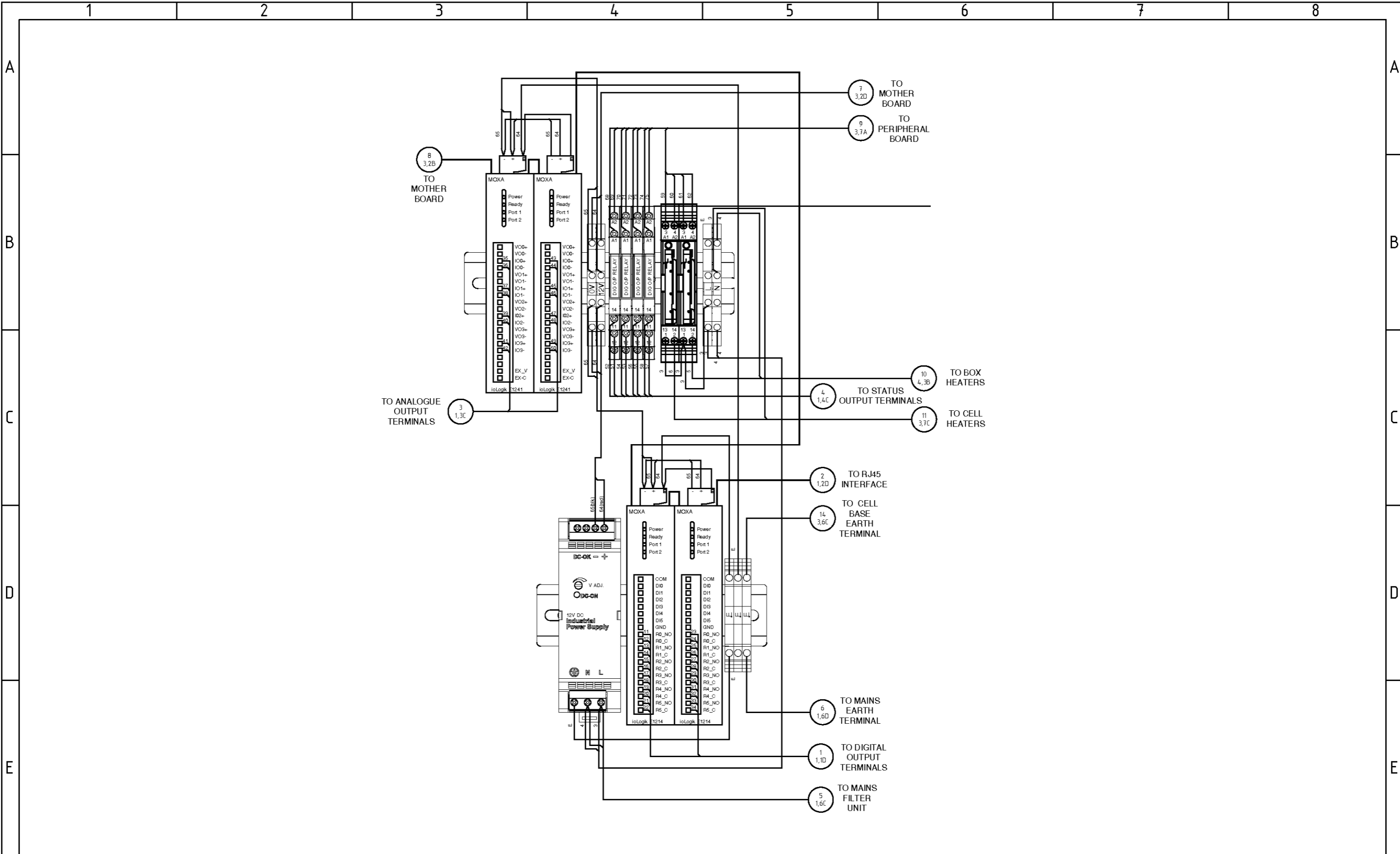
DESCRIPTION:
CT5800 GAS ANALYZER

REV. A	DRAWN BY	JMC
	CHECKED BY	??
	ISSUE DATE	28/11/2016

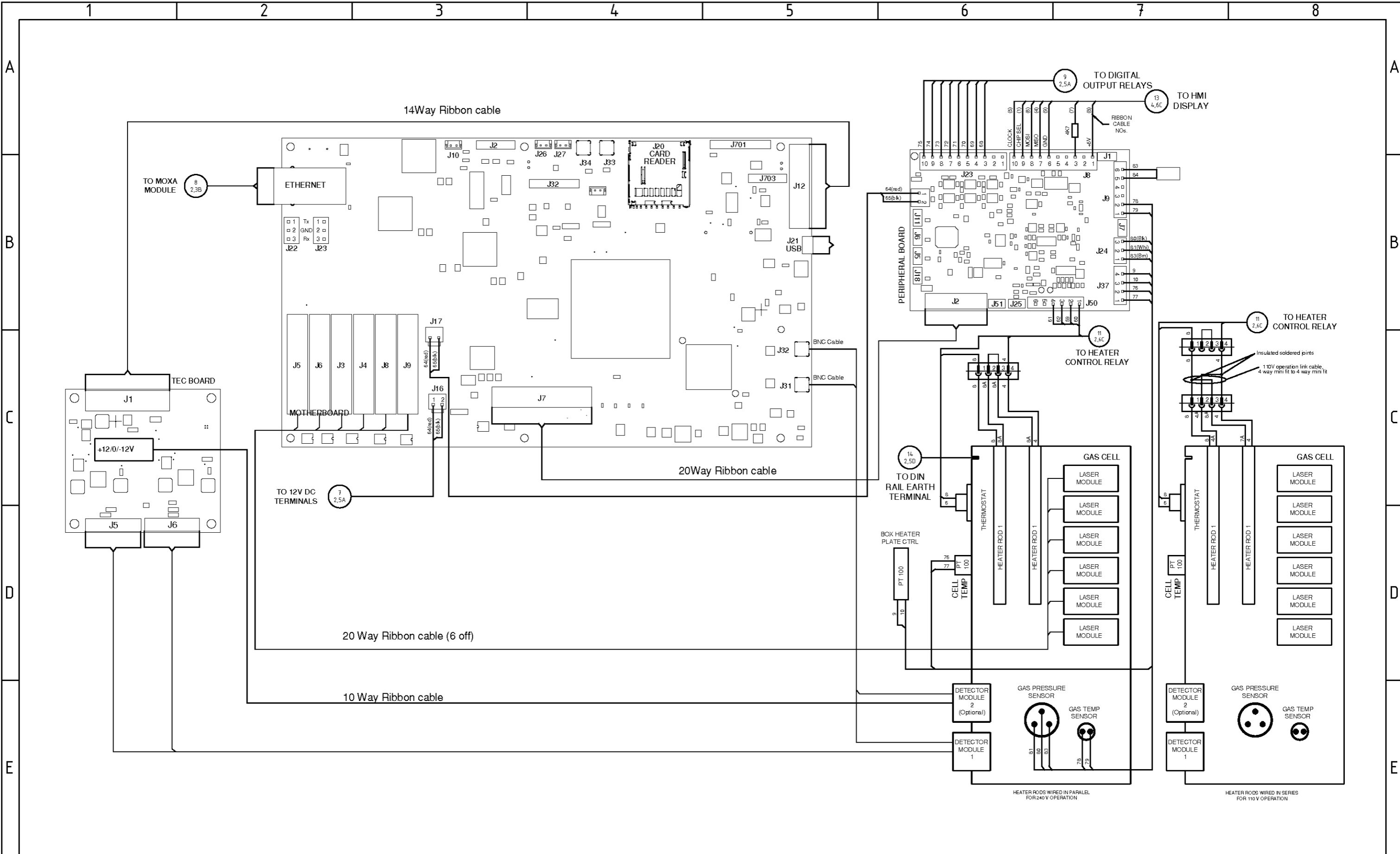
SHEET 1 OF 4

1
 1.2A

BALLOON I.D. NO.
 DRAWING SHEET LOC.
 DRAWING SHEET NO.

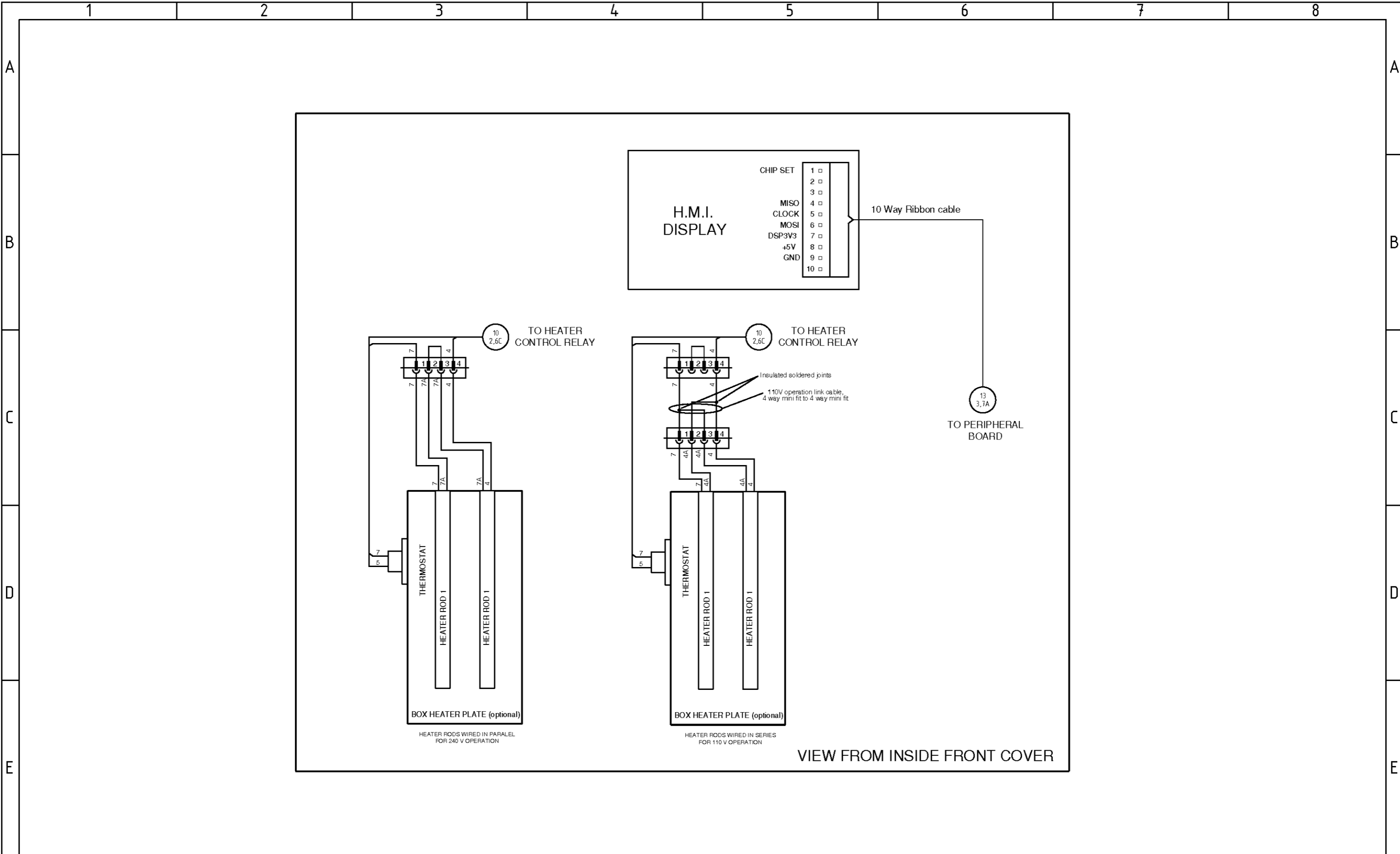


	ROSEMOUNT CASCADE TECHNOLOGIES LTD GLENDEVON HOUSE-CASTLE BUSINESS PARK STIRLING FK9 4TZ-UK	GENERAL DRAWING PRACTICE TO ISO14617, PNEUMATIC SYMBOLS DRAWN TO ISO1219-1, PIPING AND INSTRUMENTATION DIAGRAMS (P&ID) DRAWN TO ISO 10628, WIRING DRAWN TO IEC61346 & ICS 19-2002, WHERE APPLICABLE, CUSTOM SYMBOLS LISTED ON KEY PROVIDED, BLOCK DIAGRAMS CAN BE INSERTED TO CLARIFY FUNCTIONALITY.	A3 DO NOT SCALE DO NOT ALTER MANUALLY	DRAWING No: W-2000-0038	REV. A	DRAWN BY JMC
		THIS DRAWING AND DATA CONTAINED WITHIN IT ARE THE SOLE PROPERTY OF CASCADE TECHNOLOGIES LTD, PART OF EMERSON PROCESS MANAGEMENT AND CANNOT BE COPIED, COMMUNICATED OR REPLICATED PARTIALLY OR IN ITS ENTIRETY WITHOUT EXPRESSED WRITTEN CONSENT BY CASCADE TECHNOLOGIES LTD.		DESCRIPTION: CT5800 GAS ANALYZER	CHECKED BY ??	ISSUE DATE 28/11/2016
SHEET 2 OF 4						BALLOON I.D. NO. 1
DRAWING SHEET LOC. 1,2A						DRAWING SHEET NO.



		GENERAL DRAWING PRACTICE TO ISO14617, PNEUMATIC SYMBOLS DRAWN TO ISO1219-1, PIPING AND INSTRUMENTATION DIAGRAMS (P&ID) DRAWN TO ISO 10628, WIRING DRAWN TO IEC61346 & ICS 19-2002, WHERE APPLICABLE, CUSTOM SYMBOLS LISTED ON KEY PROVIDED, BLOCK DIAGRAMS CAN BE INSERTED TO CLARIFY FUNCTIONALITY.	A3	DRAWING No: W-2000-0038	REV. A	DRAWN BY JMC
	CASCADE TECHNOLOGIES LTD GLENDEVON HOUSE-CASTLE BUSINESS PARK STIRLING FK9 4TZ-UK	THIS DRAWING AND DATA CONTAINED WITHIN IT ARE THE SOLE PROPERTY OF CASCADE TECHNOLOGIES LTD, PART OF EMERSON PROCESS MANAGEMENT AND CANNOT BE COPIED, COMMUNICATED OR REPLICATED PARTIALLY OR IN ITS ENTIRETY WITHOUT EXPRESSED WRITTEN CONSENT BY CASCADE TECHNOLOGIES LTD.	DO NOT SCALE DO NOT ALTER MANUALLY	DESCRIPTION: CT5800 GAS ANALYZER	CHECKED BY ??	ISSUE DATE 28/11/2016

DRG No:W-2000-0038 REVISION:A
 DATE LAST SAVED:28-Nov-16 09:28
 SAVED BY:JChalmers
 TEMPLATE: 7.3.3.00001-06



VIEW FROM INSIDE FRONT COVER



ROSEMOUNT
 CASCADE TECHNOLOGIES LTD
 GLENDEVON HOUSE-CASTLE BUSINESS PARK
 STIRLING FK9 4TZ-UK

GENERAL DRAWING PRACTICE TO ISO14617, PNEUMATIC SYMBOLS DRAWN TO ISO1219-1, PIPING AND INSTRUMENTATION DIAGRAMS (P&ID) DRAWN TO ISO 10628, WIRING DRAWN TO IEC61346 & ICS 19-2002, WHERE APPLICABLE, CUSTOM SYMBOLS LISTED ON KEY PROVIDED, BLOCK DIAGRAMS CAN BE INSERTED TO CLARIFY FUNCTIONALITY.
 THIS DRAWING AND DATA CONTAINED WITHIN IT ARE THE SOLE PROPERTY OF CASCADE TECHNOLOGIES LTD, PART OF EMERSON PROCESS MANAGEMENT AND CANNOT BE COPIED, COMMUNICATED OR REPLICATED PARTIALLY OR IN ITS ENTIRETY WITHOUT EXPRESSED WRITTEN CONSENT BY CASCADE TECHNOLOGIES LTD.

A3
 DO NOT SCALE
 DO NOT ALTER
 MANUALLY

DRAWING No:
W-2000-0038
 DESCRIPTION:
CT5800 GAS ANALYZER

REV. A	DRAWN BY	JMC
	CHECKED BY	??
	ISSUE DATE	28/11/2016
SHEET 4 OF 4		
1 BALLOON I.D. NO. 1.2A DRAWING SHEET LOC. DRAWING SHEET NO.		