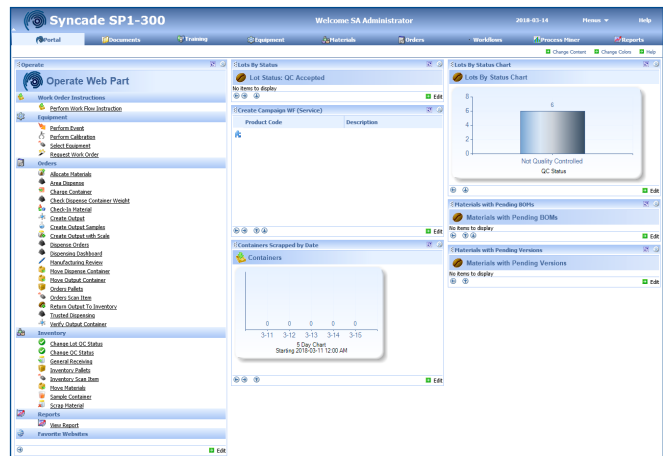


# Syncade Web Parts

- Customize operational features in a single interface
- Create personalized dashboard for critical items, tasks, and functionality
- Easily view critical system information and assigned tasks



Syncade Portal dashboard configured with web parts for Operate, Lots by Status, Materials with Pending BOMs, and Containers Scrapped by Date.

## Introduction

Syncade Web Parts are supported add-ons that streamline your MES experience. Web parts are deployed through the Syncade Portal, a personalized access point to critical data and operational functionality. Both management and operations personnel can benefit from using web parts.

Syncade Portal can be configured for specific operational roles to simplify or control the MES experience. Avoid jumping between several modules and screens to get the job done by managing data and performing operations with web parts. Specific web parts offer graphical representation of system data, making Syncade Portal your at-a-glance guide for decision-making.

All standard web parts are available through the Syncade Support Site once they have passed Emerson's quality process to ensure that they are tested and supportable.

## Improve User Experience

Simplify your MES experience while driving operational efficiency with Syncade web parts. Types of web parts include:

- Material and Inventory Management
- Order Management and Workflow
- Equipment Tracking
- Document Control and Archiving
- Database Management

**Material and Inventory Management**

View lots by status, received, and rejected date. Monitor materials with pending bill of materials and versions. Track components by scrapped and dispensed date. List inventory issued to cost center and below reorder point. Area dispense and charge materials.

**Order Management and Workflow**

View workflows that are running and orders with comments on instructions. Create new campaigns, then view and organize by completed date. Review order charging summaries and PO expected delivery dates. Perform work instruction.

**Equipment Tracking**

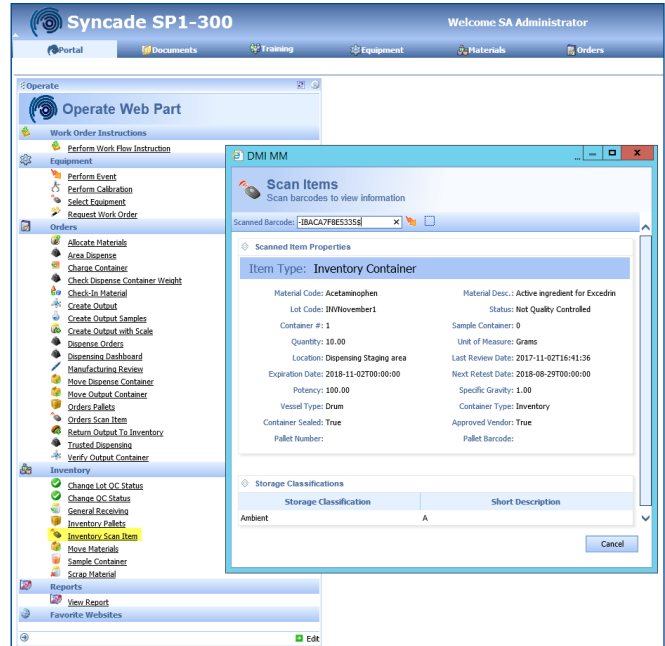
Approve events to manage equipment maintenance and condition. Perform equipment calibration reviews from Syncade Portal.

**Document Control and Archiving**

Perform user review and approval. Monitor documents by subscription and status. Easily search and view change requests that require attention by interface. Edit bill of materials and browse documents.

**Database Management**

View database diagnostics and hard disk usage. Monitor Microsoft message queuing service (MSMQ) from Syncade Portal.



*Operate web part retrieves properties and storage classification associated with scanned inventory barcode.*

**Emerson  
North America, Latin America:**

+1 800 833 8314 or  
+1 512 832 3774

**Asia Pacific:**

+65 6777 8211

**Europe, Middle East:**

+41 41 768 6111

[www.emerson.com/syncade](http://www.emerson.com/syncade)

©2018, Emerson. All rights reserved.

The Emerson logo is a trademark and service mark of Emerson Electric Co. All other marks are the property of their respective owners.

The contents of this publication are presented for informational purposes only, and while every effort has been made to ensure their accuracy, they are not to be construed as warranties or guarantees, express or implied, regarding the products or services described herein or their use or applicability. All sales are governed by our terms and conditions, which are available on request. We reserve the right to modify or improve the designs or specifications of our products at any time without notice.

